

OPPOSITES ATTRACT

Industrial cool meets classic comfort in this stunning black and white Mid-levels home designed by Peggy Bels

設計師Peggy Bels以黑白色調為這間半山住所換上新裝，並融合工業風格和經典格調

BY JACQUELINE TSANG PHOTOGRAPHY EDGAR TAPAN



Location:
Mid-levels

Floor area:
780sq ft interior,
800sq ft exterior

Specifics:
1 bed, 1 bath

previous page:

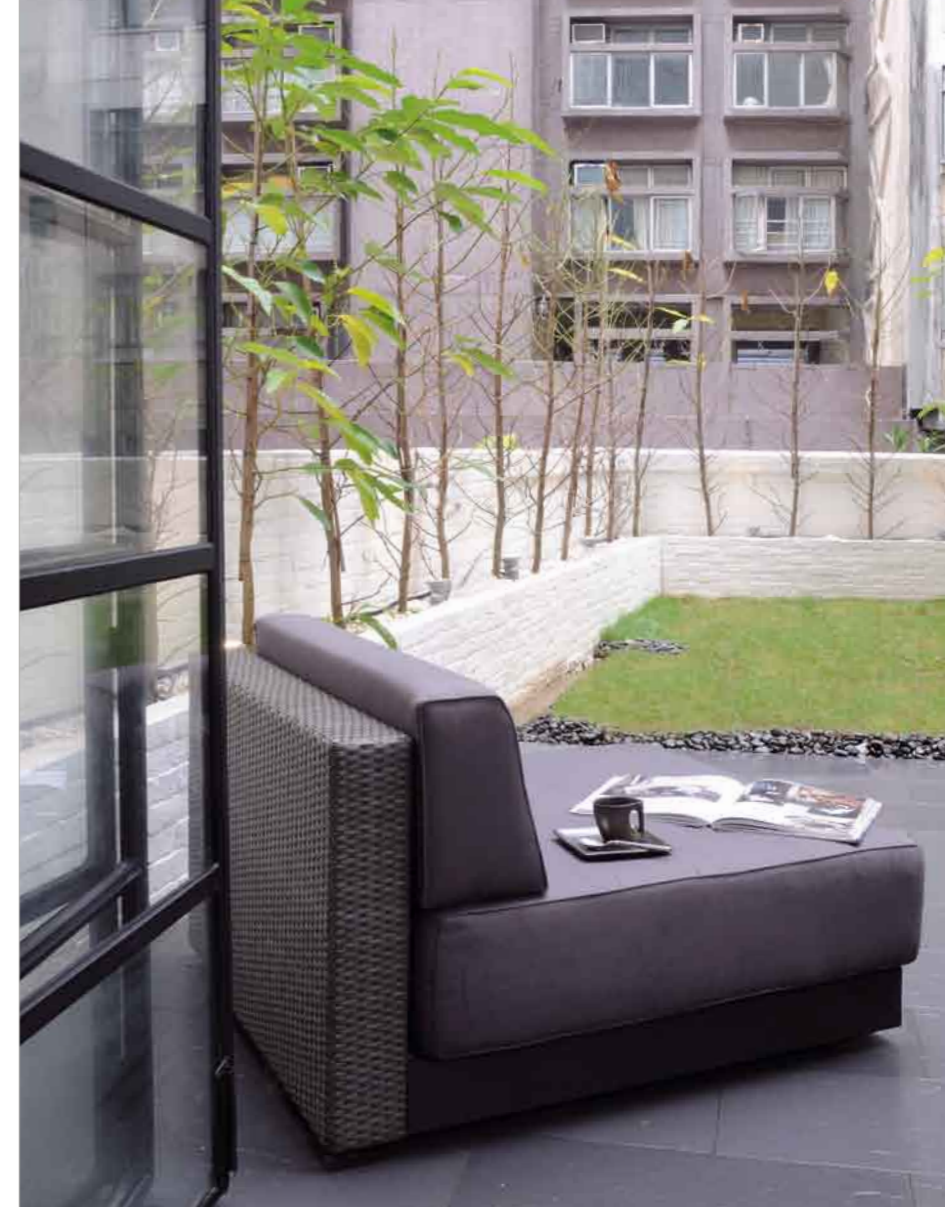
Oversized photography and art books add colour and character to this black and white living room

clockwise from

right: The feature brick wall on one side of the living room lends the space texture; the windows in the bedroom open up into the outdoor terrace; the double windows flood the interior with light and add a distinctly contemporary style to the space

前頁圖：特大照片和藝術書籍為黑白客廳添上色彩

順時針方向：客廳一邊的特色磚牆為空間注入質感；睡房的窗子外就是戶外平台；雙層窗子讓大量日照進室內，營造出當代格調



French designer Peggy Bels had her work cut out for her. Not only did she want to renovate a cramped five-bedroom flat into a more liveable space, but she also hoped to create a look that was as inviting as it was industrial, as contemporary as it was warm. The end result is a compliment to her hard work: this is a home that demonstrates how seemingly contrasting elements can interact perfectly together, just as black does with white.

"I wanted to create a mini loft that was very graphic," Bels says. The unit, located on Caine Road in Mid-levels, originally contained five bedrooms and had an illegal structure on the terrace, not to mention asbestos insulation in the ceiling. Nevertheless, the designer says the potential was huge: the extensive terrace was perfect for entertaining, while the double windows flooded the interior with light.

"The client's [design] brief was fairly open," Bels says. "The owner wanted a contemporary interior but gave me carte blanche on the design... We began from scratch and knocked down every wall. We totally reconfigured the space."

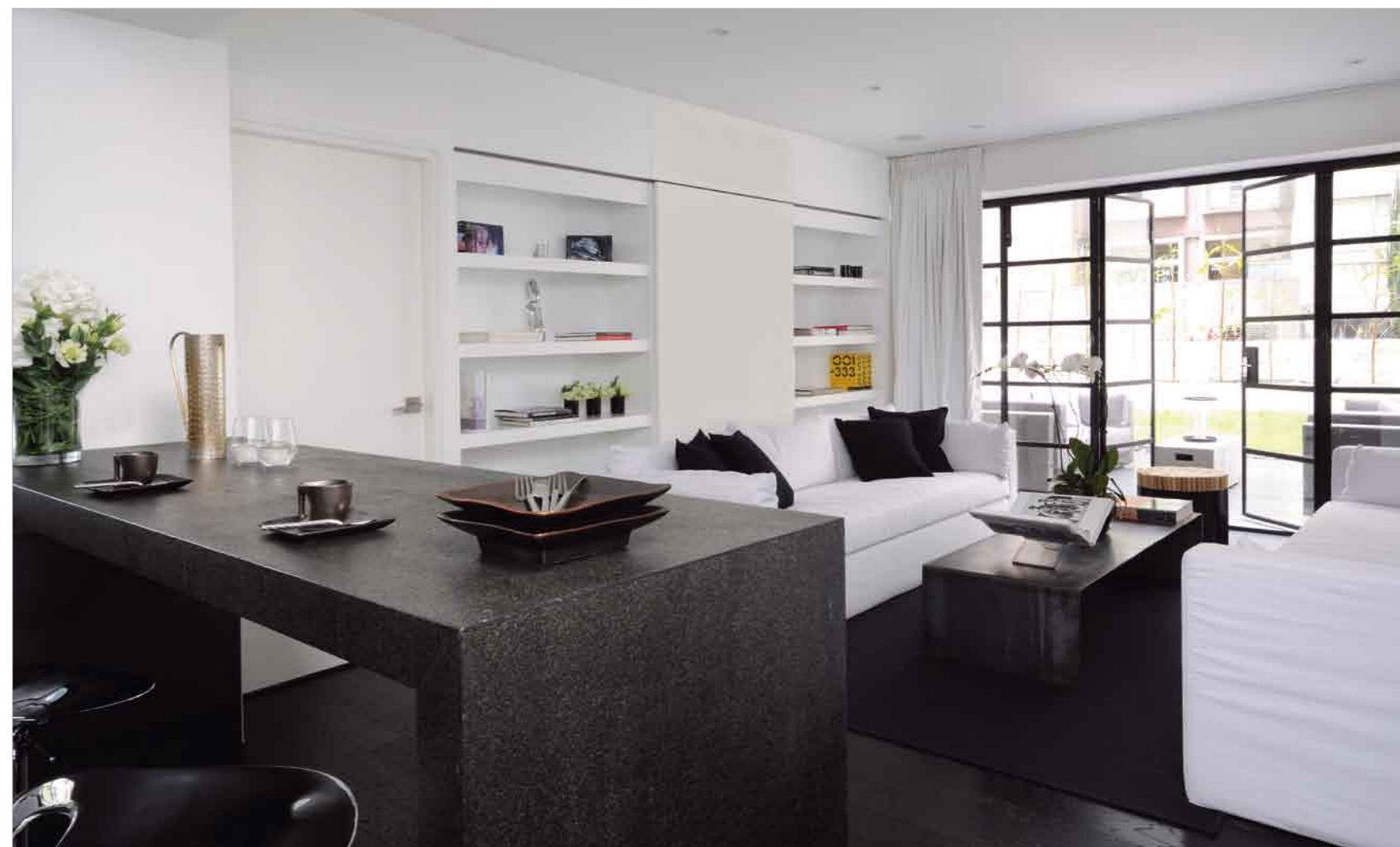
With the space stripped down, the designer got to work. The striking black, white and grey palette is one of the first things you notice when entering the

法國設計師Peggy Bels騰出時間接手了這項工作。她不但要把一間佈局狹窄的5房單位，改建成一個更能切合實際生活需要的空間，同時希望能打造出一種既富溫馨感覺又帶有工業味道、既能散發現代氣息又具備溫暖格調的裝潢。完工後，居所的新貌完全符合設計師的期望，她的用心和努力並沒有絲毫白費：新裝潢展現了看似對比的元素如何能互相融合，互相輝映，例如黑白兩種對比極大的色彩，能和諧地組合在一起，營造出優美的感覺。

「我想打造一間滿載圖案的閣樓式小巧單位。」Bels表示道。單位位於半山區堅道，前身是一個設有5間睡房的單位，而平台上還設有一個非法僭建的結構，以及石棉絕緣天花板。不過，設計師指這個空間的改造潛力其實很大：寬敞的天台是舉行戶外餐宴的好地方，而雙層玻璃窗可讓大量日光射進室內，提升居所的明亮感。

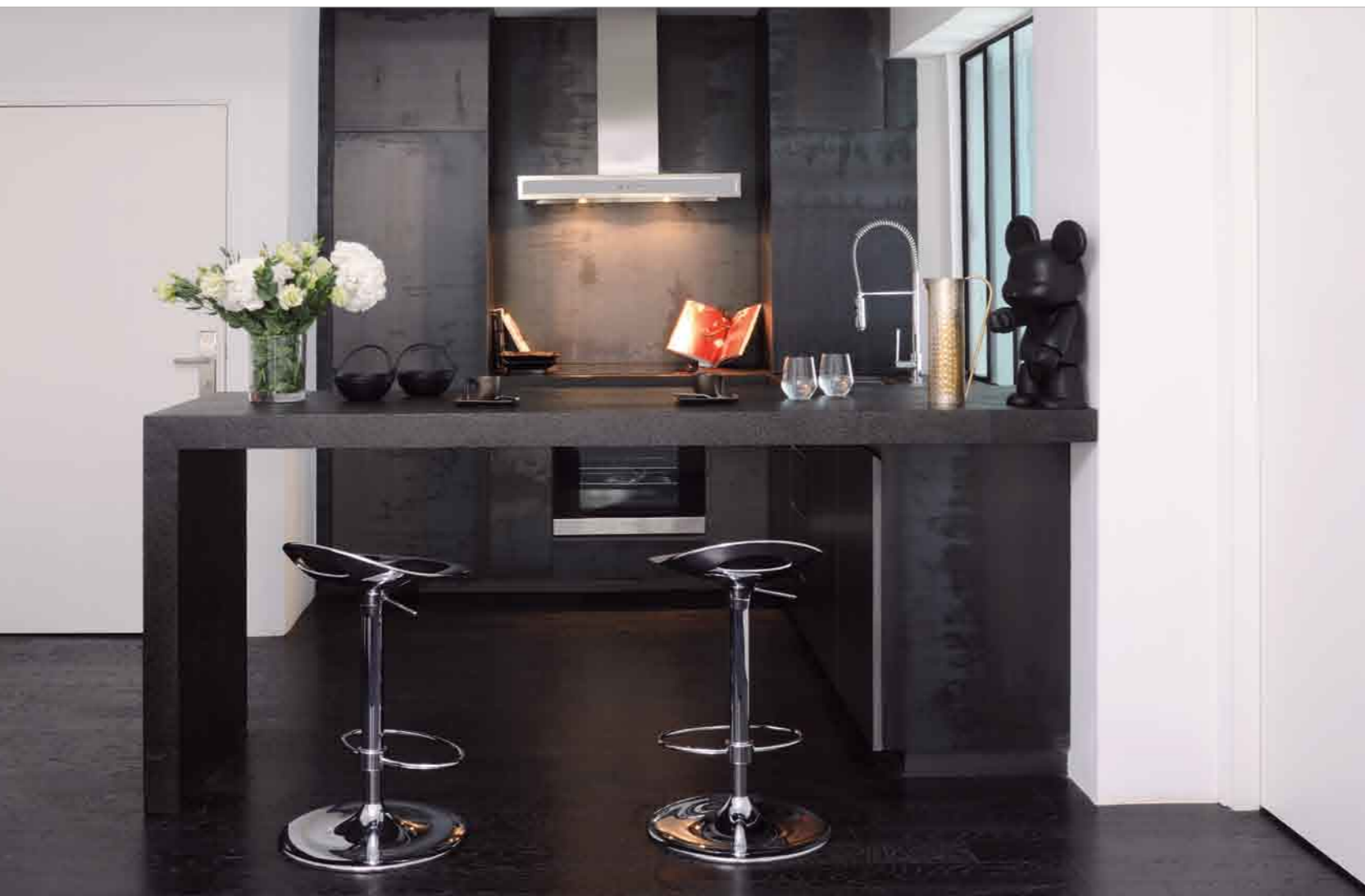
「客人對於這個設計工程的要求其實很簡單。」Bels指出：「屋主想要一種現代的室內裝潢，但也讓我全權決定住所的各項設計……我們由最基本的草圖著手，並拆掉每一堵牆壁。到最後，整個空間也給重新規劃過。」

拆走規限了空間的分隔牆後，設計師便正式進行各個工序。踏進室內，首先注意到的是一屋奪目的黑、白和灰色組合，但當你走近一點留神細看，會發現真正使居所與眾不同的，是各種細節元素，為空間注入滿滿的迷人感覺。窗子、咖啡桌和廚櫃均採用金屬作面材，目的是要為住所製造特色；另一邊廂，沙發襯上了白色亞麻布藝，特色牆





AMONG THE DESIGNER'S FAVOURITE SPACES IS THE GARDEN TERRACE, WHICH PRACTICALLY BEGS TO BE USED AS A PARTY VENUE, WITH ITS LUSH GREENERY, COMFORTABLE OUTDOOR SEATING AND EASY, LAIDBACK AMBIENCE



home, but, on closer inspection, it is clear that what really lends the space its unique charm is the attention to detail. Bels used metal surfaces on the windows, coffee table and kitchen cabinets "to give the flat character", while the white linen of the sofa and the white brick on the feature wall made for a "warm and soothing ambience", she explains.

Bels designed the coffee table and the kitchen cabinet herself, and she recounts that finding the right kind of metal for the apartment's industrial pieces was not easy. The result was well worth the effort, however: the gorgeous industrial metal she chose gives the kitchen a raw, edgy appeal.

Among the designer's favourite things about the apartment is the garden terrace, and it's easy to see why. The extensive 800-sq-ft outdoor space practically begs to be used as a party venue, with its lush greenery, comfortable outdoor seating and easy, laidback ambience. Bels used an uneven white brick for the surrounding wall, tying it in

by white brickwork. Bels explains that these elements create a warm and soothing atmosphere.

Bels herself designed the coffee table and kitchen cabinets, she recalls, at the time for some of the industrial-style accessories she chose to give the space a raw, edgy appeal. "It wasn't an easy task, but the time and effort were worth it, because the industrial metal in the kitchen really gives it a unique, edgy appeal," she says. Bels worked hard to find the perfect metal for the kitchen that would give it a raw, edgy appeal.

The entire project, the designer's favourite was the garden terrace, and the reason was simple—this outdoor space reached 800 square feet, a beautiful, lush green space with comfortable seating, a great spot for a party. Bels chose the white brick for the feature wall, which echoes the white brick walls in the living and bedroom. The concrete coffee table also continues the industrial feel of the kitchen, while the white linen of the sofa and the white brick on the feature wall made for a "warm and soothing ambience", she explains.

Bels chose a modern style for the entire house's design theme, and she added surprising elements in different places, such as the French designer Domeck's 1940s-style bedside lamp, which she placed in the bedroom. The designer often buys various design pieces on eBay, and she chooses pieces that perfectly fit the design of the house.

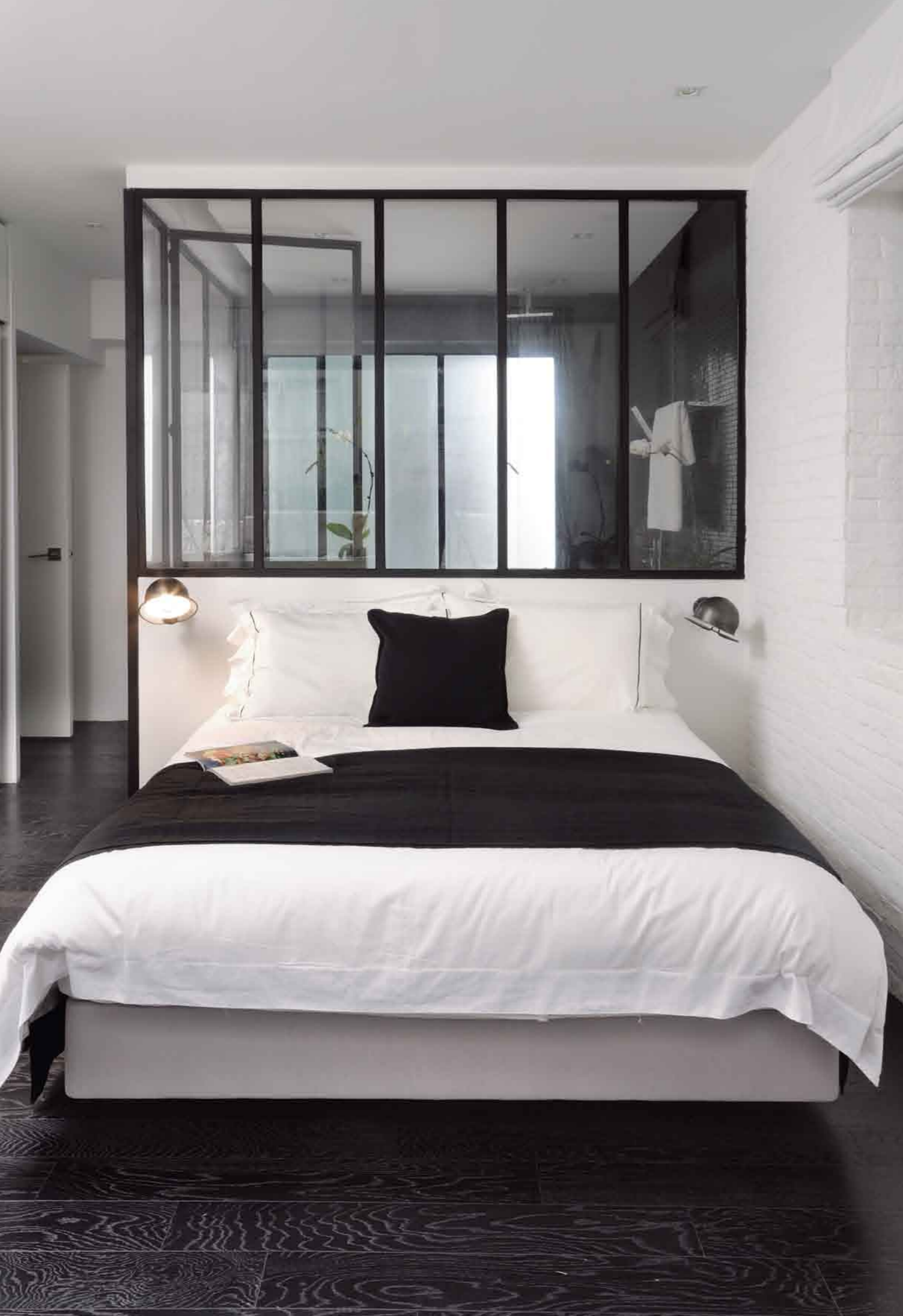
opposite clockwise from top left:

The Chiquita stool by Kenneth Cobonpue is Bels' favourite furniture piece; the white linen of the sofa works with the wall to create a "warm and soothing ambience", says Bels; Bels laboured to find the perfect metal for the kitchen that would give it a raw, edgy appeal

above: the 800-sq-ft outdoor space comprises both a stone-tiled entertaining area and a span of lush green grass

對頁圖順時針方向: Kenneth Cobonpue設計的Chiquita凳子是Bels最喜愛的傢具；沙發的白色亞麻布襯墊跟牆壁共同營造出溫暖柔和的格調；Bels為廚房四出搜尋合適的金屬，以打造簡樸前衛的風格

上圖:佔地800呎的平台由用餐區和綠草地組成



with the white feature wall in the living room as well as the bedroom, while the concrete coffee table brings to mind the same industrial edginess of the kitchen area.

While she kept the overall design contemporary, she also threw in the odd surprise element here and there. French designer Domeck created the Jielde bedside lamps in the late 1940s; Bels managed to obtain them from eBay and the stunning vintage pieces now appear in the bedroom.

Another highlight of the apartment – and the designer’s favourite furniture piece – is the Chiquita stool designed by Kenneth Cobonpue. The stool offers a comfortable, stylish seating option at one end of the interior coffee table, and the natural wood of the surface is in pleasing contrast to the surrounding metal table and window frames. Says Bels, “The mix of all these elements makes [the space] industrial, while reflecting a feeling of comfort and wellbeing.”

Looking around the apartment, one immediately feels this sense of welcoming warmth. The bar area in the kitchen serves as the perfect setting for get-togethers with friends, while the soft white linen of the sofa brings to mind thoughts of lazy afternoons curled up with a book. The space, with all its contrasts and contradictions, seems almost to have a personality of its own. As Bels tells us, “It’s the mix that gives character to the place.”

居所另一個能吸引注目的焦點，就是由Kenneth Cobonpue設計的Chiquita凳子——這是設計師最喜愛的傢具。這款凳子放於咖啡桌的一邊，具備舒適而時尚的感覺，而其由木材打造而成的凳面跟四周的金屬桌子和窗框形成悅目又有趣的對比，也成功令它突圍而出。Bels指出：「所有元素的混搭使用，能為空間製造出工業氣息，並能同時營造出一屋舒服悠閒的格調。」不同的元素組合一起，締造出令人由心喜愛的效果。

置身這間居所內，環顧四周，你會感受到一種溫暖窩心的感覺、家的感覺。廚房內的酒吧區是享用輕鬆聚餐的理想地點，最適合和好友們在此品嚐餐點；當你望向客廳，視上了白色亞麻布沙發觸感柔軟，令人很想立刻跳進其中，靜靜細閱喜愛的書本，懶洋洋地度過一個寫意的下午。這個空間滿佈了各種奪目的對比效果，使居所擁有獨一無二的風格。就像Bels所言：「當中的混搭設計為空間注入了滿滿的特色。」❖

opposite: The warm wooden flooring contrasts beautifully with the rough industrial appeal of the vintage bedside lamps by Domeck
above left to right: The semi-open shower visually expands the compact bathroom space; Bels uses white brick on one of the bedroom walls as well, tying it in with the living room and terrace walls

對頁圖：帶有溫暖感覺的木地板跟Domeck的懷舊床頭燈形成漂亮的對比
上圖左至右：半開放式的淋浴間能在視覺上擴闊狹小的浴室；Bels在睡房其中一堵牆壁上用白色磚塊，跟客廳和平台的牆壁互相呼應

THE LIST:

- Interior design** 室內設計: Peggy Bels
- Silver chrome bar stools** 銀鉻吧凳: OVO
- “Chiquita” stool** 凳子: Kenneth Cobonpue
- Vintage 40s bedside lamps** 懷舊床頭燈: Domeck
- White sofa** 白色沙發: Peggy Bels
- Outdoor sofa and coffee table** 戶外沙發及咖啡桌: decodesign.hk

FOR CONTACT DETAILS SEE DIRECTORY